

MONTHLY MEMBERSHIP PROGRESS REPORT

LOCATION TEXAS

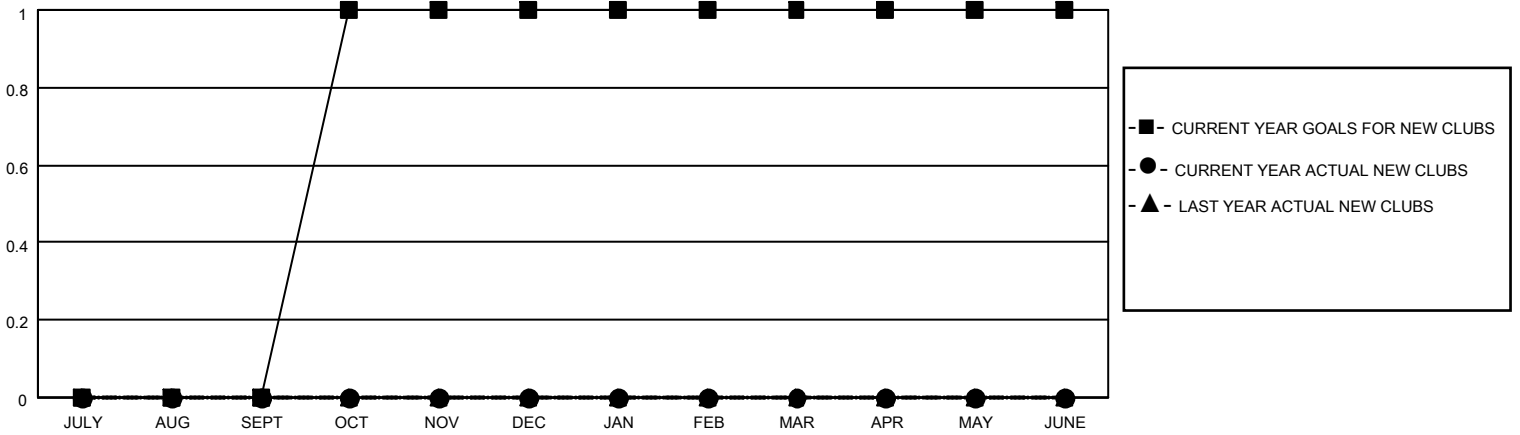
District 2 T3

Results as of: 3/31/2023

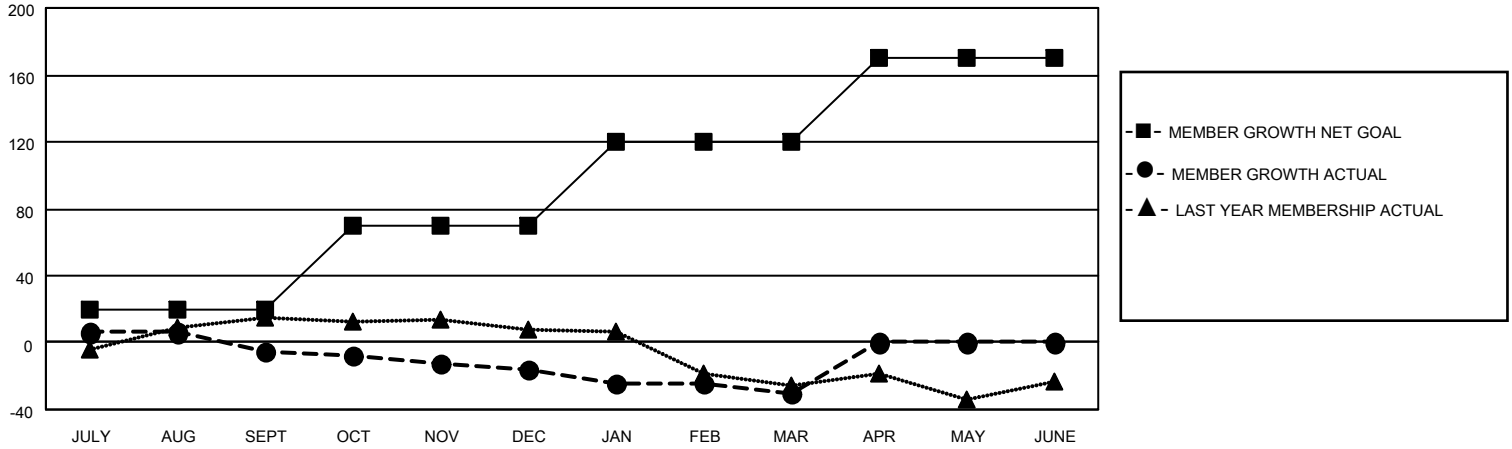
Clubs			
RESULTS FOR 2022-2023			
QUARTER	NEW CLUB GOAL	NEW CLUBS	DROPPED CLUBS
JULY/AUG/SEPT	0	0	0
OCT/NOV/DEC	1	0	0
JAN/FEB/MAR	0	0	0
APR/MAY/JUNE	0	0	0

Members			
RESULTS FOR 2022-2023			
QUARTER	MEMBER GROWTH NET GOAL	MEMBER GROWTH ACTUAL	DROPPED MEMBERS ACTUAL (including transfers)
JULY/AUG/SEPT	20	42	35
OCT/NOV/DEC	50	17	28
JAN/FEB/MAR	50	17	30
APR/MAY/JUNE	50	0	0

GOALS AND ACTUAL NEW CLUBS CUMULATIVE



GOALS AND ACTUAL MEMBERS CUMULATIVE



DROPPED CLUBS: 0

16 CLUBS OF 33 ADDED 1 OR MORE NEW MEMBERS

GENDER DISTRIBUTION

MALE	346 (50.73%)
FEMALE	336 (49.27%)
NON BINARY	0 (0.00%)
PREFER NOT TO ANSWER	0 (0.00%)

DROPPED MEMBERS

DECEASED	9
CLUB CANCELLED	0
OTHER	84
TOTAL	93

[CLICK HERE FOR CUMULATIVE MEMBERSHIP DATA](#)

TOTAL FAMILY UNIT MEMBERS	90
FAMILY MEMBERS PAYING HALF DUES	46